



237897 Inglis Falls Road, R.R.#4, Owen Sound, ON N4K 5N6
Telephone: 519.376.3076 Fax: 519.371.0437 Email: admin@greysauble.on.ca
www.greysauble.on.ca

Ontario Access Coalition
c/o Tony Berlier
49 garden avenue
Toronto, on
M6r1h5

July 5, 2013

Dear Tony;

Re: Significant land for sale below Old Baldy Conservation Area, Kimberley Ontario

I recently had the opportunity to meet with Jon Gullett with the Alpine Club of Canada and Randy Kielbasiewicz of the Ontario Access Coalition to discuss a property for sale near Kimberley Ontario. The property is well known to the climbing community and during our meeting it was very obvious that all parties had a significant interest in the land. The 52 acre parcel of land with its rugged tall cliffs and sweeping landscape is the signature of the Niagara Escarpment in the Beaver Valley. The property is listed MLS for \$290,000.00 and is owned by Mr. Ken Stephenson. Most notable during our conversation was the sense of urgency given the fact the land is currently listed on the market.

Grey Sauble Conservation owns to the top of the rock at Old Baldy (see map) with the Stephenson land occupying the majority of the escarpment base. The vertical face of the cliff is used by recreational rock climbers who currently access the area via the Stephenson property. The access across the Stephenson property has been possible with the signing of an annual access/ hold harmless agreement provided to Grey Sauble Conservation at no charge. The climbing access agreement may be in jeopardy if the property is sold privately.

The land is of considerable interest to Grey Sauble Conservation from a natural heritage and recreation perspective. Grey Sauble Conservation does not have the resources to purchase the land at this time however we are willing to take ownership of the land and pay for any legal cost related to a potential purchase. Recent conversations with Stephenson have shown no interest in donating the property via tax relief programs or severing a portion of the land.



Watershed Municipalities
Arran-Elderslie, Chatsworth, Georgian Bluffs, Grey Highlands
Meaford, Owen Sound, South Bruce Peninsula, Blue Mountains

At the conclusion of our meeting it was apparent to all organizations that we needed to continue to work together to find a way to purchase the land. We recognized the challenge of finding a donor that could champion the opportunity to help purchase the land, thus leaving an important legacy for future outdoor enthusiasts.

I am hoping that our organizations can meet again in the very near future to search out new opportunities to purchase this land. In the meantime, I will continue to leave no stone unturned.

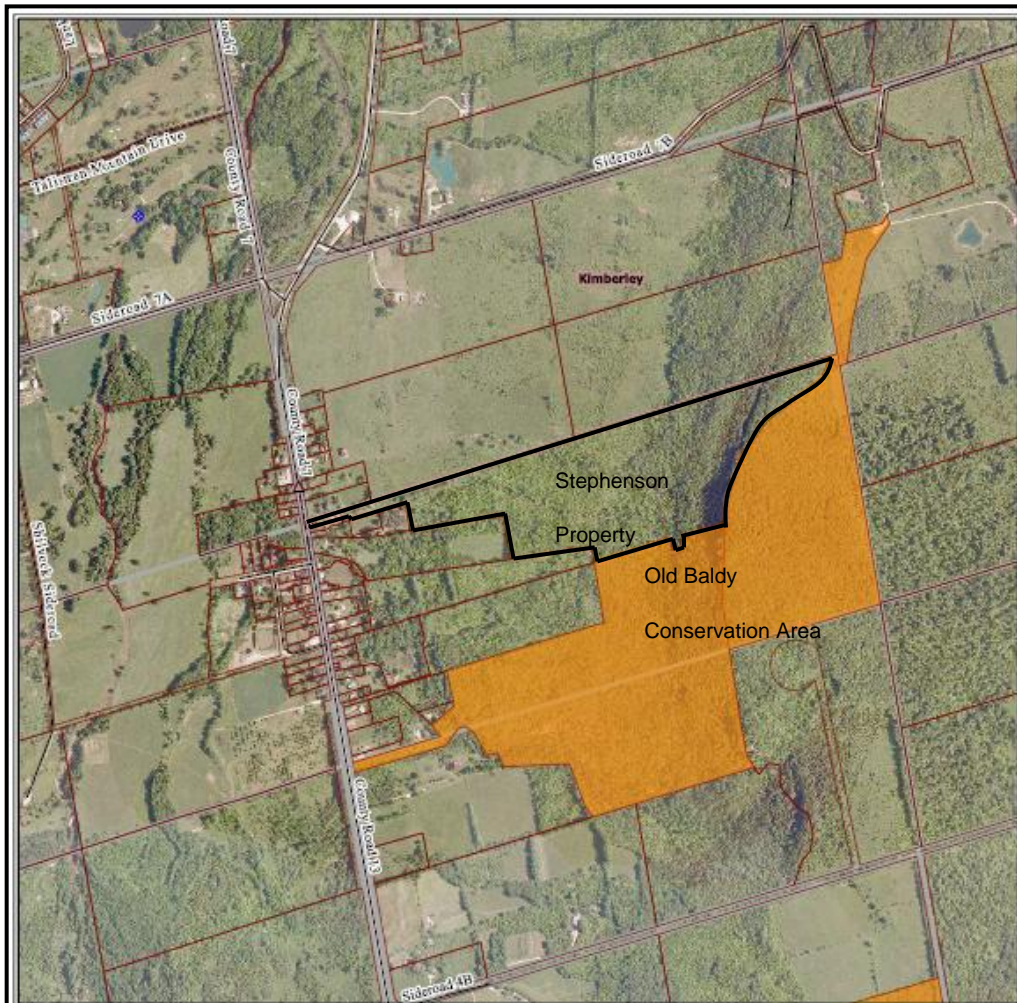
Best regards,



Chris Hachey
Land Management Coordinator



Watershed Municipalities
Arran-Elderslie, Chatsworth, Georgian Bluffs, Grey Highlands
Meaford, Owen Sound, South Bruce Peninsula, Blue Mountains



Old Baldy Conservation Area

Scale = 1:12000,
 1 cm : 124.91 m, 1 in : 1040.89 ft
 Universal Transverse Mercator - Zone 17 (N)
 North American 1983 (Canada)



This map was created 6/11/2013 from the Grey Sauble Conservation Authority (GSCA) Interactive Web Mapping Site. The included mapping has been compiled from various sources and is for information purposes only. GSCA is not responsible for, and cannot guarantee, the accuracy of all the information contained within the map. Regulation lines were created by GSCA using 1 metre contours interpolated from the Provincial (10 metre) Digital Elevation Model Versions 1 & 2 & 1:10000 scale mapping. Produced by GSCA with Data supplied under Licence by Members of the Ontario Geospatial Data Exchange, © Queen's Printer for Ontario and its licensors, 2013 May Not be Reproduced without Permission. THIS IS NOT A PLAN OF SURVEY. The use of these Data does not constitute an endorsement by the MNR or the Ontario Government of use of such Data. This mapping contains products of the South Western Ontario Orthophotography Project (SWOOP). These Images were taken in 2006 at 30 cm resolution by First Base Solutions Inc. They are the property of Grey Sauble Conservation © 2013.



- | | |
|--------------------|------------------------------------|
| Arboretum Trees | GSC Boundary |
| Towns/Villages | ON Regulation 151/06 |
| Watercourses | Dept. of Defence (Training Centre) |
| 5m Contours | First Nations Lands |
| Roads | Georgian Bay/Huron Shore |
| Highways | Evaluated Wetlands |
| GSC Trails (GPS) | Waterbodies |
| Bruce Trail - Main | Wetland Areas |
| Bruce Trail - Side | Subwatershed Boundaries |
| Assessment Parcels | Township Boundaries |
| Lots & Concessions | County Boundaries |



Watershed Municipalities
 Arran-Elderslie, Chatsworth, Georgian Bluffs, Grey Highlands
 Meaford, Owen Sound, South Bruce Peninsula, Blue Mountains